

**North American Electric, Inc.**

**"Your Source for a Complete Line of Electric Motors & Gearing"**



**Shaft Mount Reducers  
& Accessories**

## **Mission Statement**

To provide the United States market with industrial motors, controls and gearing products which meet or exceed customer expectations for quality, performance, and reliability. Provided at the lowest possible cost and delivered in accordance with the customer's schedule, through our authorized distributor network.

## **Company History**

North American Electric, Inc. is a wholesale supplier of Special Purpose and General Purpose, AC electric motors, controls and gearing products. We take pride in supplying high performance, high quality products at extremely competitive prices throughout the United States. Donald E. Hackman, Sr. and David E. Hackman founded the company in October of 1993. The company's primary focus is sourcing quality electric motors and gearing products from various manufacturers, both locally and internationally, and distributing them throughout the United States through local distributors and service centers. Our nationwide distributor and service network offer strong local support for our products by providing critical logistical, technical, marketing, sales and maintenance support, as well as fast, friendly customer service.

## **WARRANTY POLICY**

All NBS shaft mount reducers sold by North American Electric, Inc. are warranted to be free from defects in material and workmanship. The warranty period is 24 months from the date of manufacture, or one year from the date the reducer is installed (put into service). North American Electric, Inc. shall, at its option and expense, either repair or replace any failed reducer or part, which is defective, within the warranty period. To be covered under warranty, the reducer must have, at all times, been operated or used under normal operating conditions for which the reducer was designed. In the event of warranty claims, North American Electric, Inc. must be notified promptly following any reducer failure. The reducer should be sent to a North American Electric, Inc. authorized service center to determine the cause of failure and the warranty procedure outlined below must be strictly followed. After the examination, a determination will be made if the failure was due to defective material and/or workmanship. If the failure was due to defective material and/or workmanship, North American Electric, Inc. will replace or repair the reducer. North American Electric's liability under this warranty or any other warranty whether expressed or implied in law or fact shall be limited to the repair or replacement of defective material and workmanship, and in no event shall North American Electric, Inc. be liable for consequential or indirect damages, including freight.



**NEMA PREMIUM EFFICIENCY  
INVERTER DUTY MOTORS**

Meets Or Exceeds NEMA Premium  
Efficiency Levels & May Qualify For  
Energy Efficiency Rebates  
TOTALLY ENCLOSED FAN COOLED or  
OPEN DRIP PROOF



**STAINLESS STEEL  
WASHDOWN DUTY MOTORS**

1/3 - 20 HP 2,4,6 Pole  
IP 66 Protection  
Inverter Duty



**PREMIUM CRUSHER DESIGN MOTORS**

1-600 HP; 4,6,8 Pole  
NEMA Design C High Strength 4140 Grade  
Stainless Steel Shaft  
586/7U and UZ Frame Heavy Duty Cast Iron  
Construction (Including Fan Cover)  
Bearing Sizes: DE=NU324 ODE=6324



**CLOSE COUPLED  
PUMP MOTORS**

1-50 HP; Cast Iron  
High Efficiency  
Corrosion Resistant Paint



**NEMA PREMIUM EFFICIENCY  
ROUND BODY MOTOR**

1-30 HP; 1800 RPM  
C - Face Without Feet



**PREMIUM EFFICIENCY  
EXPLOSION PROOF MOTORS**

1-300 HP; 2,4,6 Pole  
All Motors Meet Or Exceed UL 674 Specification  
As Required By OSHA For Installation And Use  
In Hazardous Locations.  
Class I, Division I, Groups C&D And  
Class II, Division I, Groups E,F And G  
UL Certified - File E228654  
CSA + "C" + "US" - Canadian Standard ISO9001



**SINGLE PHASE, 56C FRAME, TEFC**

1/3-2 HP; 2,4 Pole  
High Starting Torques  
Manual Overload Protection (Optional)  
Capacitor Start / Capacitor Run Design  
Rolled Steel Frame Construction IP55  
Protection-Removable Feet



**OIL WELL PUMP MOTORS, TEFC**

3-150 HP; 6 Pole  
NEMA Design D High Slip(5% To 8% Slip)  
Special Purpose Oil Well Pump Motors  
Heavy Duty Cast Iron Frame Construction



**SINGLE PHASE, FARM DUTY, TEFC**

1/3-10 HP; 4 Pole  
High Starting Torques  
Manual overload Protection (1/3 Thru 5 HP)  
Capacitor Start / Capacitor Run Design  
Rolled Steel Frames Cast Iron Endbells



**OIL WELL PUMP MOTORS, ODP**

7.5-50 HP; 6 Pole  
NEMA Design D High Slip(5% To 8% Slip)  
Special Purpose Oil Well Pump Motors  
Heavy Duty Cast Iron Frame Construction



**SINGLE PHASE OPEN DRIPPROOF**

3,5 HP; 4 Pole  
High Starting Torques  
Capacitor Start / Capacitor Run Design  
Rolled Steel Frame Construction  
Cast Iron Endbells



**VERTICAL HOLLOW SHAFT  
PUMP MOTORS  
HIGH EFFICIENCY AND  
STANDARD EFFICIENCY**

10 - 500 HP; 4 Pole  
High Torque - High Thrust



**THREE PHASE, 56C FRAME, TEFC**

1/3-3 HP; 2,4 POLE  
High Efficiency Design  
General Purpose Motors  
Rolled Steel Frame Construction,  
Aluminum Endbells  
IP55 Protection Removable Feet  
575V Available



**ROTARY UNIT FOR  
ROTARY PHASE CONVERTER**

3-60 HP; 4 Pole  
For Use With Rotary Phase Converters  
To Run Three Phase Equipment From  
Single Phase Power  
High Efficiency Design, Heavy Duty Cast  
Iron Construction, TEFC



**THREE PHASE, TEFC  
ROLLED STEEL MOTORS**

1-10 HP; 2,4 Pole  
High Efficiency Design-General Purpose  
Light Weight Rolled Steel Frame



**SHAFT MOUNT REDUCERS  
& ACCESSORIES**

Sizes 2-10  
Gear Ratios: 15:1 & 25:1  
Screw Conveyor Adapters Now Available  
Repair Kits Also Available



**THREE PHASE OPEN DRIPPROOF**

1-20 HP; 2,4,6 Pole  
High Efficiency Design General  
Purpose Motors  
Rolled Steel Frame Construction,  
Cast Iron Endbells



**ELECTRIC MOTOR CONTROL**

Full Voltage Starters  
Soft Starters  
VFDs  
Part Wind / WYE - Delta Starters



**MOTOR SLIDE BASES**

Available 56C Through 505U





# Shaft Mount Reducers

- Gear Box Sizes 2-10
- Extra Long Mounting Bolts
- Ratios 15:1 & 25:1
- ISO 9001

Case Hardened  
Steel Shafts & Gears

Corrosion Resistant  
Case

CEMA Adapter  
Bolt Holes

Meets or Exceeds  
AGMA 9 Standards

Double Lip  
Seals

Computerized Design  
and Construction

High Quality  
Bearings

Screw Conveyor  
Adaptable

Torque Arm  
Included

A "Drop-In" for  
Dodge®\*



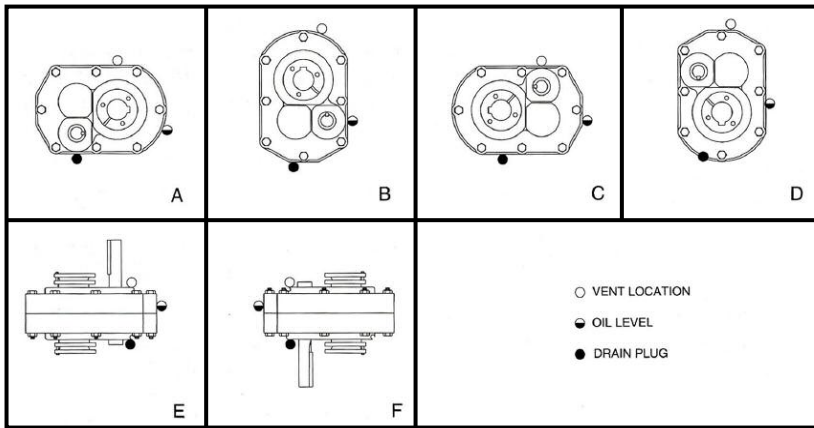
\* Dodge is a trademark of Baldor Electric Company, which does not sponsor or authorize, or is otherwise affiliated with this product.



# SHAFT MOUNT GEAR REDUCERS

OUR MODEL NUMBER	DESCRIPTION			LIST PRICE	WT. (LBS.)
	BOX SIZE	RATIO	OUTPUT BORE (MAX)		
NBS-115-2-15	2	15:1	1-15/16"	\$911	58
NBS-115-2-25	2	25:1	1-15/16"	\$911	58
NBS-203-3-15	3	15:1	2-3/16"	\$1,618	98
NBS-203-3-25	3	25:1	2-3/16"	\$1,618	98
NBS-207-4-15	4	15:1	2-7/16"	\$2,188	139
NBS-207-4-25	4	25:1	2-7/16"	\$2,188	139
NBS-215-5-15	5	15:1	2-15/16"	\$3,287	207
NBS-215-5-25	5	25:1	2-15/16"	\$3,287	207
NBS-307-6-15	6	15:1	3-7/16"	\$4,295	285
NBS-307-6-25	6	25:1	3-7/16"	\$4,295	285
NBS-315-7-15	7	15:1	3-15/16"	\$8,500	462
NBS-315-7-25	7	25:1	3-15/16"	\$8,500	462
NBS-407-8-15	8	15:1	4-7/16"	\$11,654	633
NBS-407-8-25	8	25:1	4-7/16"	\$11,654	633
NBS-415-9-15	9	15:1	4-15/16"	\$15,286	760
NBS-415-9-25	9	25:1	4-15/16"	\$15,286	760
NBS-507-10-15	10	15:1	5-7/16"	\$23,234	1020
NBS-507-10-25	10	25:1	5-7/16"	\$23,234	1020

Mounting Positions



**CAUTION**

North American Electric Shaft Mount Reducers are **shipped without oil**. The Reducer must be filled with the proper amount of oil according to the mounting position table to the left. Failure to fill the case with oil could result in the failure of the reducer and damage to the associated equipment.

Model Number	Approximate Capacity (Quarts & Liters)					
	Position A	B	C	D	E	F
NBS-115-2	.875 Quarts	1.0 Quarts	0.625 Quarts	1.0 Quarts	1.625 Quarts	1.75 Quarts
	.83 Liters	.95 Liters	0.59 Liters	.95 Liters	1.54 Liters	1.66 Liters
NBS-203-3	1.5 Quarts	1.5 Quarts	0.75 Quarts	2.3 Quarts	2.62 Quarts	3.0 Quarts
	1.4 Liters	1.4 Liters	0.71 Liters	2.1 Liters	2.48 Liters	2.84 Liters
NBS-207-4	1.9 Quarts	2.3 Quarts	1.25 Quarts	1.8 Quarts	3.38 Quarts	4.25 Quarts
	1.8 Liters	2.2 Liters	1.18 Liters	1.7 Liters	3.19 Liters	4.02 Liters
NBS-215-5	3.3 Quarts	4.0 Quarts	3.25 Quarts	4.0 Quarts	7.00 Quarts	8.63 Quarts
	3.1 Liters	3.8 Liters	3.08 Liters	3.8 Liters	6.62 Liters	8.04 Liters
NBS-307-6	4.3 Quarts	5.2 Quarts	4.25 Quarts	5.0 Quarts	8.63 Quarts	9.13 Quarts
	4.0 Liters	4.7 Liters	4.00 Liters	4.7 Liters	8.20 Liters	8.6 Liters
NBS-315-7	6.5 Quarts	8.0 Quarts	7.25 Quarts	9.3 Quarts	15.4 Quarts	16.4 Quarts
	6.1 Liters	7.6 Liters	6.86 Liters	8.8 Liters	14.6 Liters	15.5 Liters
NBS-407-8	8.5 Quarts	11 Quarts	10.5 Quarts	8.5 Quarts	19.2 Quarts	19.2 Quarts
	8.0 Liters	10 Liters	9.94 Liters	8.0 Liters	18.1 Liters	18.1 Liters
NBS-415-9	13 Quarts	13 Quarts	12.5 Quarts	14.25 Quarts	25.375 Quarts	25.375 Quarts
	12.3 Liters	12.3 Liters	11.83 Liters	13.48 Liters	24 Liters	24 Liters
NBS-507-10	23 Quarts	14 Quarts	15.75 Quarts	18.75 Quarts	41 Quarts	41 Quarts
	21.75 Liters	13.25 Liters	14.90 Liters	17.75 Liters	38.8 Liters	38.8 Liters

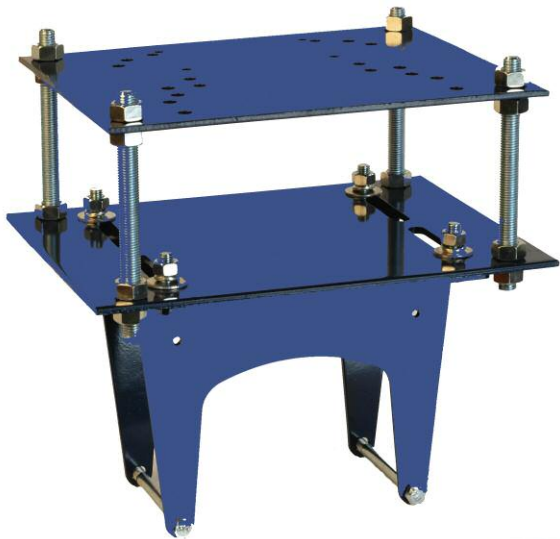
# Shaft Mount Reducer Accessories



**Belt Guard**



**Torque Arm Included  
With Shaft Mount Reducer**



**Motor Mount**



**Screw Conveyor Adapter**



**Backstops and  
Tapered Bushings**



## NBS SHAFT MOUNT PARTS AND ACCESSORIES

### BELT GUARDS

CATALOG NUMBER	DESCRIPTION		LIST PRICE
NBS-BG-2	Belt Guard -	Size 2 Box	\$387
NBS-BG-3	Belt Guard -	Size 3 Box	\$440
NBS-BG-4	Belt Guard -	Size 4 Box	\$505
NBS-BG-5	Belt Guard -	Size 5 Box	\$557
NBS-BG-6	Belt Guard -	Size 6 Box	\$634
NBS-BG-7	Belt Guard -	Size 7 Box	\$746
NBS-BG-8	Belt Guard -	Size 8 Box	\$878
NBS-BG-9	Belt Guard -	Size 9 Box	\$1,084
NBS-BG-10	Belt Guard -	Size 10 Box	\$1,647



### BUSHING KITS

CATALOG NUMBER	DESCRIPTION		LIST PRICE
NBS-BK-2-1.1516	Bushing Kit -	Bushing Size - 1-15/16"	\$134
NBS-BK-2-1.1116	Bushing Kit -	Bushing Size - 1-11/16"	\$134
NBS-BK-2-1.0716	Bushing Kit -	Bushing Size - 1-7/16"	\$134
NBS-BK-3-2.0316	Bushing Kit -	Bushing Size - 2-3/16"	\$164
NBS-BK-3-2.0000	Bushing Kit -	Bushing Size - 2"	\$164
NBS-BK-3-1.1516	Bushing Kit -	Bushing Size - 1-15/16"	\$164
NBS-BK-4-2.0716	Bushing Kit -	Bushing Size - 2-7/16"	\$227
NBS-BK-4-2.0316	Bushing Kit -	Bushing Size - 2-3/16"	\$227
NBS-BK-5-2.1516	Bushing Kit -	Bushing Size - 2-15/16"	\$313
NBS-BK-5-2.0102	Bushing Kit -	Bushing Size - 2-1/2"	\$313
NBS-BK-5-2.0716	Bushing Kit -	Bushing Size - 2-7/16"	\$313
NBS-BK-6-3.0716	Bushing Kit -	Bushing Size - 3-7/16"	\$407
NBS-BK-6-2.1516	Bushing Kit -	Bushing Size - 2-15/16"	\$407
NBS-BK-7-3.1516	Bushing Kit -	Bushing Size - 3-15/16"	\$547
NBS-BK-7-3.0716	Bushing Kit -	Bushing Size - 3-7/16"	\$547
NBS-BK-8-4.0716	Bushing Kit -	Bushing Size - 4-7/16"	\$664
NBS-BK-8-3.1516	Bushing Kit -	Bushing Size - 3-15/16"	\$664
NBS-BK-8-3.0716	Bushing Kit -	Bushing Size - 3-7/16"	\$664
NBS-BK-9-3.0716	Bushing Kit -	Bushing Size - 3-7/16"	\$780
NBS-BK-9-3.1516	Bushing Kit -	Bushing Size - 3-15/16"	\$780
NBS-BK-9-4.0716	Bushing Kit -	Bushing Size - 4-7/16"	\$780
NBS-BK-10-4.1516	Bushing Kit -	Bushing Size - 4-15/16"	\$1185
NBS-BK-10-5.0716	Bushing Kit -	Bushing Size - 5-7/16"	\$1185



## NBS SHAFT MOUNT PARTS AND ACCESSORIES



### BACKSTOPS

MODEL NUMBER	DESCRIPTION			LIST PRICE
NBS-BSA-2	Backstop Assembly Kit -	Size 2 Box		\$214
NBS-BSA-3	Backstop Assembly Kit -	Size 3 Box		\$273
NBS-BSA-4	Backstop Assembly Kit -	Size 4 Box		\$273
NBS-BSA-5	Backstop Assembly Kit -	Size 5 Box		\$325
NBS-BSA-6	Backstop Assembly Kit -	Size 6 Box		\$616
NBS-BSA-7	Backstop Assembly Kit -	Size 7 Box		\$616
NBS-BSA-8	Backstop Assembly Kit -	Size 8 Box		\$1,350
NBS-BSA-9	Backstop Assembly Kit -	Size 9 Box		\$1,350
NBS-BSA-10	Backstop Assembly Kit -	Size 10 Box		\$2,052



### MOTOR MOUNTS

MODEL NUMBER	DESCRIPTION			LIST PRICE
NBS-MM-2	Motor Mount -	Size 2 Box -	56 - 215T Frames	\$387
NBS-MM-3	Motor Mount -	Size 3 Box -	56 - 215T Frames	\$398
NBS-MM-4	Motor Mount -	Size 4 Box -	143T - 286T Frames	\$621
NBS-MM-5	Motor Mount -	Size 5 Box -	143T - 286T Frames	\$621
NBS-MM-6	Motor Mount -	Size 6 Box -	143T - 326T Frames	\$864
NBS-MM-7	Motor Mount -	Size 7 Box -	143T - 365T Frames	\$927
NBS-MM-8	Motor Mount -	Size 8 Box -	213T - 365T Frames	\$1,112
NBS-MM-9	Motor Mount -	Size 9 Box -	213T - 365T Frames	\$1,112
NBS-MM-10	Motor Mount -	Size 10 Box -	254T - 365T Frames	\$1,690



### TORQUE ARMS

MODEL NUMBER	DESCRIPTION			LIST PRICE
NBS-TA-2	Torque Arm -	Size 2 Box -	56 - 215T Frames	\$62
NBS-TA-3	Torque Arm -	Size 3 Box -	56 - 215T Frames	\$62
NBS-TA-4	Torque Arm -	Size 4 Box -	143T - 286T Frames	\$112
NBS-TA-5	Torque Arm -	Size 5 Box -	143T - 286T Frames	\$112
NBS-TA-6	Torque Arm -	Size 6 Box -	143T - 326T Frames	\$167
NBS-TA-7	Torque Arm -	Size 7 Box -	143T - 365T Frames	\$327
NBS-TA-8	Torque Arm -	Size 8 Box -	213T - 365T Frames	\$414
NBS-TA-9	Torque Arm -	Size 9 Box -	213T - 365T Frames	\$414
NBS-TA-10	Torque Arm -	Size 10 Box -	254T - 365T Frames	\$629



## NBS SHAFT MOUNT PARTS AND ACCESSORIES

### SCREW CONVEYOR ADAPTOR FLANGES AND DRIVE SHAFTS



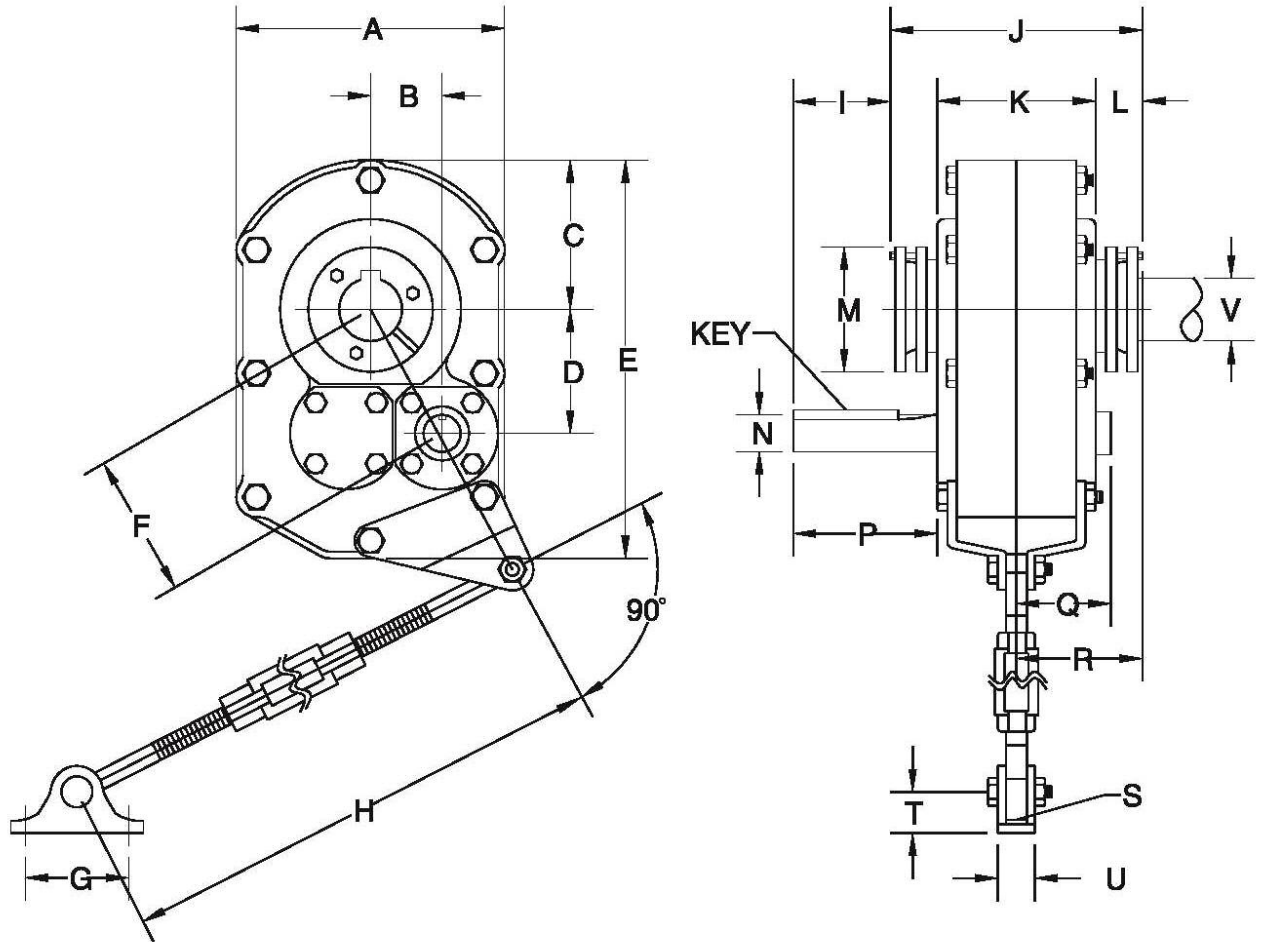
#### FLANGES

CATALOG NUMBER	DESCRIPTION		LIST PRICE
<b>NBS-SCA-2-FLANGE</b>	Screw Conveyor Adaptor Flange	Size 2 Box	<b>\$592</b>
<b>NBS-SCA-3-FLANGE</b>	Screw Conveyor Adaptor Flange	Size 3 Box	<b>\$698</b>
<b>NBS-SCA-4-FLANGE</b>	Screw Conveyor Adaptor Flange	Size 4 Box	<b>\$854</b>
<b>NBS-SCA-5-FLANGE</b>	Screw Conveyor Adaptor Flange	Size 5 Box	<b>\$939</b>
<b>NBS-SCA-6-FLANGE</b>	Screw Conveyor Adaptor Flange	Size 6 Box	<b>\$1,226</b>
<b>NBS-SCA-7-FLANGE</b>	Screw Conveyor Adaptor Flange	Size 7 Box	<b>\$1,741</b>

#### DRIVE SHAFTS

CATALOG NUMBER	DESCRIPTION		LIST PRICE
<b>NBS-SCA-2-DS-1.5000</b>	1 1/2" Screw Conveyor Adaptor Drive Shaft	#2 Screw Conveyor Drive Shaft; Fits Size 2 Box	<b>\$311</b>
<b>NBS-SCA-2-DS-2.0000</b>	2" Screw Conveyor Adaptor Drive Shaft	#2 Screw Conveyor Drive Shaft; Fits Size 2 Box	<b>\$311</b>
<b>NBS-SCA-2-DS-3.0000</b>	3" Screw Conveyor Adaptor Drive Shaft	#2 Screw Conveyor Drive Shaft; Fits Size 2 Box	<b>\$407</b>
<b>NBS-SCA-3-DS-2.0000</b>	2" Screw Conveyor Adaptor Drive Shaft	#3 Screw Conveyor Drive Shaft; Fits Size 3 Box	<b>\$429</b>
<b>NBS-SCA-3-DS-3.0000</b>	3" Screw Conveyor Adaptor Drive Shaft	#3 Screw Conveyor Drive Shaft; Fits Size 3 Box	<b>\$429</b>
<b>NBS-SCA-4-DS-2.0000</b>	2" Screw Conveyor Adaptor Drive Shaft	#4 Screw Conveyor Drive Shaft; Fits Size 4 Box	<b>\$514</b>
<b>NBS-SCA-4-DS-3.0000</b>	3" Screw Conveyor Adaptor Drive Shaft	#4 Screw Conveyor Drive Shaft; Fits Size 4 Box	<b>\$514</b>
<b>NBS-SCA-5-DS-2.0000</b>	2" Screw Conveyor Adaptor Drive Shaft	#5 Screw Conveyor Drive Shaft; Fits Size 5 Box	<b>\$659</b>
<b>NBS-SCA-5-DS-3.0000</b>	3" Screw Conveyor Adaptor Drive Shaft	#5 Screw Conveyor Drive Shaft; Fits Size 5 Box	<b>\$659</b>
<b>NBS-SCA-6-DS-3.0000</b>	3" Screw Conveyor Adaptor Drive Shaft	#6 Screw Conveyor Drive Shaft; Fits Size 6 Box	<b>\$1,112</b>
<b>NBS-SCA-6-DS-3.4375</b>	3 7/16" Screw Conveyor Adaptor Drive Shaft	#6 Screw Conveyor Drive Shaft; Fits Size 6 Box	<b>\$1,112</b>
<b>NBS-SCA-7-DS-3.0000</b>	3" Screw Conveyor Adaptor Drive Shaft	#7 Screw Conveyor Drive Shaft; Fits Size 7 Box	<b>\$1,393</b>
<b>NBS-SCA-7-DS-3.4375</b>	3 7/16" Screw Conveyor Adaptor Drive Shaft	#7 Screw Conveyor Drive Shaft; Fits Size 7 Box	<b>\$1,393</b>





Model	A	B	C	D	E	F	G	H min/max	I	J	K
NBS-115-2	8.38	2.14	4.09	3.75	11.41	4.32	3.00	26.94/32.94	2.22	7.32	4.50
NBS-203-3	9.25	2.33	4.84	4.17	12.88	4.78	3.00	26.94/32.94	2.34	9.22	5.63
NBS-207-4	10.38	2.76	5.50	4.79	15.13	5.53	4.00	29.19/35.14	3.44	9.98	6.13
NBS-215-5	13.13	3.04	6.56	5.67	18.31	6.43	4.00	29.19/35.19	3.44	10.52	6.31
NBS-307-6	15.43	4.09	7.56	6.73	21.31	7.88	4.75	29.19/35.19	3.73	11.53	6.88
NBS-315-7	18.75	5.11	9.38	8.30	25.94	9.74	4.75	29.44/35.44	3.75	12.85	7.75
NBS-407-8	20.25	6.03	10.13	9.50	28.25	11.25	7.00	30.00/36.00	4.31	14.03	8.37
NBS-415-9	22.63	6.59	11.31	10.81	31.69	12.66	7.00	30.00/36.00	6.62	14.12	8.27
NBS-507-10	25.50	6.59	12.75	12.50	35.00	14.13	7.00	30.00/36.00	6.53	15.30	9.55

Model	L	M	R	S	T	U	V Max Dia	Input Shaft			Approximate Weight (LB)
								N Dia	P	Key	
NBS-115-2	1.40	4.06	3.68	0.44	1.06	1.25	1 15/16	1.13	3.59	1/4x1/4x2-1/2	58
NBS-203-3	1.59	4.38	3.72	0.44	1.06	1.25	2 3/16	1.25	4.34	1/4x1/4x2-7/8	98
NBS-207-4	1.72	4.81	3.91	0.50	1.75	1.44	2 7/16	1.44	5.57	3/8x3/8x4-1/16	139
NBS-215-5	1.91	5.63	5.05	0.50	1.75	1.44	2 15/16	1.94	5.74	1/2x1/2x4-112	207
NBS-307-6	2.30	6.13	5.73	0.63	2.00	2.75	3 7/16	2.19	6.08	1/2x1/2x4-1/2	285
NBS-315-7	2.50	7.25	6.38	0.63	2.00	2.75	3 15/16	2.44	6.35	5/8x5/8x4-3/4	462
NBS-407-8	2.86	7.75	7.04	0.75	3.13	4.00	4 7/16	2.44	7.11	5/8x5/8x5-3/8	633
NBS-415-9	2.81	8.75	7.02	0.75	3.13	4.00	4 15/16	2.44	9.65	5/8X5/16X7-3/4	760
NBS-507-10	2.78	10.13	7.66	0.75	3.13	4.00	5 7/16	2.69	9.5	5/8X5/16X7-7/8	1020

### CLASS 1 CHART

HP	Output RPM	Reducer Selection		Minimum Sheave Dia.	
0.5	2-6	NBS-115-2-25		3	
0.75	4-5	NBS-203-3-25		4	
	6-10	NBS-115-2-25		3	
1	4-5	NBS-207-4-25		4.6	
	6-7	NBS-203-3-25		4	
	8-15	NBS-115-2-25		3	
1.5	4	NBS-215-5-25		5.4	
	5-7	NBS-207-4-25		4.6	
	8-12	NBS-203-3-25		4	
	13-23	NBS-115-2-25		3	
2	4-6	NBS-215-5-25		5.4	
	7-10	NBS-207-4-25		4.6	
	11-17	NBS-203-3-25		4	
	18-32	NBS-115-2-25	NBS-115-2-15	3	
3	4-5	NBS-307-6-25		6.2	
	6-10	NBS-215-5-25		5.4	
	11-15	NBS-207-4-25		4.6	
	16-26	NBS-203-3-25		4	
	27-51	NBS-115-2-25	NBS-115-2-15	3	
5	5-6	NBS-315-7-25		6.2	
	7-9	NBS-307-6-25		6.2	
	10-17	NBS-215-5-25		5.4	
	18-26	NBS-207-4-25	NBS-207-4-15	4.6	
	27-46	NBS-203-3-25	NBS-203-3-15	4	
	47-70	NBS-115-2-25	NBS-115-2-15	3	
7.5	4-6	NBS-407-8-25		6.2	
	7-9	NBS-315-7-25		6.2	
	10-15	NBS-307-6-25		6.2	
	16-26	NBS-215-5-25		5.4	
	27-40	NBS-207-4-25	NBS-207-4-15	4.6	
	41-70	NBS-203-3-25	NBS-203-3-15	4	
	71-74	NBS-203-3-25	NBS-203-3-15	4	
	75-85	NBS-115-2-25	NBS-115-2-15	3	
	86-95	NBS-115-2-15		3	
	96-140	NBS-115-2-15		3	
10	5		NBS-415-9-25	8	
	6-8	NBS-407-8-25		6.2	
	9-12	NBS-315-7-25		6.2	
	13-20	NBS-307-6-25		6.2	
	21-36	NBS-215-5-25	NBS-207-4-15	5.4	
	37-56	NBS-207-4-25	NBS-203-3-15	4.6	
	57-70	NBS-203-3-25	NBS-203-3-15	4	
	71-85	NBS-203-3-25	NBS-203-3-15	4	
	86-103	NBS-203-3-15		4	
	104-115	NBS-115-2-15		3	
	141-158	NBS-115-2-15		3	
	9-13	NBS-407-8-25		6.2	
15	5-6	NBS-507-10-25		8.5	
	7-8	NBS-415-9-25		8	
	14-19	NBS-315-7-25		6.2	
	20-32	NBS-307-6-25	NBS-307-7-15	6.2	
	33-56	NBS-215-5-25	NBS-215-6-15	5.4	
	57-70	NBS-207-4-25	NBS-207-4-15	4.6	
	71-85	NBS-207-4-25		4.6	
	86-93	NBS-207-4-15		4.6	
	94-115	NBS-203-3-15		4	
116-140	NBS-203-3-15		4		
20	7-8	NBS-507-10-25		8.5	
	9-12	NBS-415-9-25		8	
	13-18	NBS-407-8-25		6.2	
	19-26	NBS-315-7-25	NBS-315-7-15	6.2	
	27-45	NBS-307-6-25	NBS-307-6-15	6.2	
	46-70	NBS-215-5-25	NBS-215-5-15	5.4	
	71-78	NBS-215-5-25	NBS-215-5-15	5.4	
	79-85	NBS-207-4-25	NBS-207-4-15	4.6	
	86-115	NBS-207-4-15		4.6	
	116-140	NBS-207-4-15*		4.6	
	25	8-10	NBS-507-10-25		8.5
11-15		NBS-415-9-25		8	
16-23		NBS-407-8-25		6.2	
24-33		NBS-315-7-25	NBS-315-7-15	6.2	
34-59		NBS-307-6-25	NBS-307-6-15	6.2	
60-70		NBS-215-5-25*	NBS-215-5-15	5.4	
71-80		NBS-215-5-25*	NBS-215-5-15	5.4	
81-101		NBS-215-5-15*		5.4	
102-132		NBS-207-4-15*		4.6	
133-140		NBS-207-4-15*		4.6	
30	10-13	NBS-507-10-25		8.5	
	14-19	NBS-415-9-25		8	
	20-28	NBS-407-8-25	NBS-407-8-15	6.2	
	29-41	NBS-315-7-25	NBS-315-7-15	6.2	
	42-70	NBS-307-7-25	NBS-307-6-15	6.2	
	71-75	NBS-307-7-25	NBS-307-6-15	6.2	
	76-115	NBS-215-5-15*		5.4	
	116-125	NBS-215-5-15*		5.4	
	40	13-18	NBS-507-10-25		8.5
19-25		NBS-415-9-25	NBS-415-9-15	8	
26-38		NBS-407-8-25	NBS-407-8-15	6.2	
39-57		NBS-315-7-25	NBS-315-7-15	6.2	
58-70		NBS-307-6-25	NBS-307-6-15	6.2	
71-81		NBS-307-6-25*	NBS-307-6-15*	6.2	
82-114		NBS-307-6-15*		6.2	
115-125		NBS-215-5-15*		5.4	
50		16-22	NBS-507-10-25		8.5
		23-32	NBS-415-9-25	NBS-415-9-15	8
	33-49	NBS-407-8-25	NBS-407-8-15	6.2	
	50-70	NBS-315-7-25	NBS-315-7-15	6.2	
	71-74	NBS-315-7-25	NBS-315-7-15	6.2	
	75-125	NBS-307-6-15*		6.2	
60	19-27	NBS-507-10-25	NBS-507-10-15	8.5	
	28-39	NBS-415-9-25	NBS-415-9-15	8	
	40-60	NBS-407-8-25	NBS-407-8-15	6.2	
	61-70	NBS-315-7-25*	NBS-315-7-15*	6.2	
	71-120	NBS-315-7-15*		6.2	
75	24-34	NBS-507-10-25	NBS-507-10-15	8.5	
	35-50	NBS-415-9-25	NBS-415-9-15	8	
	51-70	NBS-407-8-25	NBS-407-8-15	6.2	
	71-78		NBS-407-8-15*	6.2	
79-120	NBS-315-7-15*		6.2		
100	32-46	NBS-507-10-25	NBS-507-10-15	8.5	
	47-69	NBS-415-9-25*	NBS-415-9-15*	8	
	70-120		NBS-407-8-15*	6.2	
125	41-59	NBS-507-10-25	NBS-507-10-15	8.5	
	60-70	NBS-415-9-15*	NBS-415-9-25*	8	
	71-90	NBS-415-9-15*		8	
	91-123		NBS-407-8-15*	6.2	
150	50-70	NBS-507-10-25	NBS-507-10-15	8.5	
	71-75	NBS-507-10-15*	NBS-507-10-25*	8.5	
	76-80	NBS-507-10-15*		8.5	
	81-120	NBS-415-9-15*		8	
200	69-120	NBS-507-10-15*		8.5	

\*Additional cooling provisions may be required, consult the factory with application details



### CLASS 2 CHART

HP	Output RPM	Reducer Selection		Minimum Sheave Dia.
0.5	4-5	NBS-203-3-25		4
	6-9	NBS-115-2-25		3
0.75	4-5	NBS-207-4-25		4.6
	6-8	NBS-203-3-25		4
	9-16	NBS-115-2-25		3
1	5-7	NBS-207-4-25		4.6
	8-11	NBS-203-3-25		4
	12-22	NBS-115-2-25		3
1.5	5-6	NBS-215-5-25		5.4
	7-11	NBS-207-4-25		4.6
	12-18	NBS-203-3-25		4
	19-34	NBS-115-2-25	NBS-115-2-15	3
2	4-5	NBS-307-6-25		6.2
	6-9	NBS-215-5-25		5.4
	10-14	NBS-207-4-25		4.6
	15-24	NBS-203-3-25	NBS-203-3-15	4
	25-47	NBS-115-2-25	NBS-115-2-15	3
3	4-5	NBS-315-7-25		6.2
	6-8	NBS-307-6-253		6.2
	9-14	NBS-215-5-25		5.4
	15-22	NBS-207-4-25	NBS-207-4-15	4.6
	23-38	NBS-203-3-25	NBS-203-3-15	4
	39-70	NBS-115-2-25	NBS-115-2-15	3
	71-75	NBS-115-2-25	NBS-115-2-15	3
5	4-6	NBS-407-8-25		6.2
	7-8	NBS-315-7-25		6.2
	9-14	NBS-307-6-25		6.2
	15-24	NBS-215-5-25		5.4
	25-37	NBS-207-4-25	NBS-207-4-15	4.6
	38-69	NBS-203-3-25	NBS-203-3-15	4
	70-85	NBS-115-2-25	NBS-115-2-15	3
	86-89	NBS-115-2-25		3
	90-136	NBS-115-2-25		3
	7.5	5	NBS-415-9-25	
6-9		NBS-407-8-25		6.2
10-13		NBS-315-7-25		6.2
14-21		NBS-307-6-25		6.2
22-38		NBS-215-5-25	NBS-215-5-15	5.4
39-59		NBS-207-4-25	NBS-207-4-15	4.6
60-70		NBS-203-3-25	NBS-203-3-15	4
71-85		NBS-203-3-25	NBS-203-3-15	4
86-110		NBS-203-3-15		4
111-122		NBS-115-2-15		3
123-140		NBS-115-2-15		3
10		5	NBS-507-10-25	
	6-7	NBS-415-9-25		8
	8-12	NBS-407-8-25		6.2
	13-18	NBS-315-7-25		6.2
	19-29	NBS-307-6-25	NBS-307-6-15	6.2
	30-52	NBS-215-5-25	NBS-215-5-15	5.4
	53-70	NBS-207-4-25	NBS-207-4-15	4.6
	71-84	NBS-207-4-25	NBS-207-4-15	4.6
	85-130	NBS-203-3-15		4
	131-140	NBS-203-3-15		4
15	7-9	NBS-507-10-25		8.5
	10-12	NBS-415-9-15		8
	13-19	NBS-407-8-25		6.2
	20-27	NBS-315-7-25		6.2
	28-47	NBS-307-6-25	NBS-307-6-15	6.2
	48-70	NBS-215-5-25	NBS-215-5-15	5.4
	71-82	NBS-215-5-25	NBS-215-5-15	5.4
	83-117	NBS-207-4-15		4.6
	118-140	NBS-207-4-15		4.6

HP	Output RPM	Reducer Selection		Minimum Sheave Dia.
20	9-12	NBS-507-10-25		8.5
	13-17	NBS-415-9-25		8
	18-26	NBS-407-8-25		6.2
	27-38	NBS-315-7-25	NBS-315-7-15	6.2
	39-68	NBS-307-6-25	NBS-307-6-15	6.2
	69-80	NBS-215-5-25	NBS-215-5-15	5.4
	81-89		NBS-215-5-15	5.4
	91-117	NBS-215-5-15*		5.4
25	11-15	NBS-507-10-25		8.5
	16-22	NBS-415-9-25		8
	23-33	NBS-407-8-25	NBS-407-8-15	6.2
	34-49	NBS-315-7-25	NBS-315-7-15	6.2
	50-80	NBS-307-6-25	NBS-307-6-15	6.2
	81-94	NBS-307-6-15		6.2
	95-125	NBS-215-5-15*		5.4
	118-125	NBS-207-4-15*		4.6
30	11-15	NBS-507-10-25		8.5
	16-22	NBS-415-9-25		8
	23-33	NBS-407-8-25	NBS-407-8-15	6.2
	34-49	NBS-315-7-25	NBS-315-7-15	6.2
	50-80	NBS-307-6-25	NBS-307-6-15	6.2
	81-94	NBS-307-6-15		6.2
	95-125	NBS-215-5-15*		5.4
40	13-19	NBS-507-10-25		8.5
	20-27	NBS-415-9-25	NBS-415-9-15	8
	28-41	NBS-407-8-25	NBS-407-8-15	6.2
	42-60	NBS-315-7-25	NBS-315-7-15	6.2
	61-76	NBS-307-6-25	NBS-307-6-15	6.2
	77-89	NBS-307-6-15		6.2
	90-125	NBS-307-6-15*		6.2
50	18-25	NBS-507-10-25		8.5
	26-36	NBS-415-9-25	NBS-415-9-15	8
	37-56	NBS-407-8-25	NBS-407-8-15	6.2
	57-75	NBS-315-7-25	NBS-315-7-15	6.2
	76-88		NBS-315-7-15	6.2
	89-114	NBS-307-6-15*		6.2
	115-120	NBS-307-6-15*		6.2
60	22-32	NBS-507-10-25	NBS-507-10-15	8.5
	33-46	NBS-415-9-25	NBS-415-9-15	8
	47-70	NBS-407-8-25	NBS-407-8-15	6.2
	71-72	NBS-407-8-25	NBS-407-8-15	6.2
	73-95		NBS-315-7-15*	6.2
	96-110	NBS-315-7-15*		6.2
	111-120	NBS-315-7-15*		6.2
75	27-39	NBS-507-10-25	NBS-507-10-15	8.5
	40-56	NBS-415-9-25	NBS-415-9-15	8
	57-70	NBS-407-8-25	NBS-407-8-15	6.2
	71-75	NBS-407-8-25	NBS-407-8-15	6.2
	76-89		NBS-407-8-15	6.2
	90-120	NBS-315-7-15*		6.2
	111-120	NBS-315-7-15*		6.2
100	34-49	NBS-507-10-25	NBS-507-10-15	8.5
	50-73	NBS-415-9-25	NBS-415-9-15	8
	74-75	NBS-407-8-25	NBS-407-8-15	6.2
	76-120		NBS-407-8-15*	6.2
125	46-67	NBS-507-10-25	NBS-507-10-15	8.5
	68-75	NBS-415-9-15*	NBS-415-9-25*	8
	76-103	NBS-415-9-15*		8
150	59-75	NBS-507-10-25	NBS-507-10-15	8.5
	76-85	NBS-507-10-15		8.5
150	73-75	NBS-507-10-15*	NBS-507-10-25*	8.5
	76-120	NBS-507-10-15*		8.5

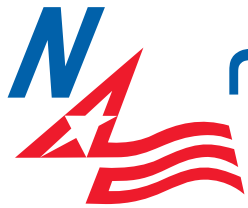
\*Additional cooling provisions may be required, consult the factory with application details

### CLASS 3 CHART

HP	Output RPM	Reducer Selection		Minimum Sheave Dia.
0.25	4-6	NBS-115-2-25		3
0.33	5-9	NBS-115-2-25		3
0.5	4-5	NBS-207-4-25		4.6
	6-7	NBS-203-3-25		4
	8-15	NBS-115-2-25		3
0.75	4.00	NBS-215-5-25		5.4
	5-7	NBS-207-4-25		4.6
	8-12	NBS-203-3-25		4
	13-23	NBS-115-2-25		3
1	4-6	NBS-215-5-25		5.4
	7-10	NBS-207-4-25		4.6
	11-17	NBS-203-3-25		4
	18-32	NBS-115-2-25		3
1.5	4-5	NBS-307-6-25		6.2
	6-10	NBS-215-5-25		5.4
	11-15	NBS-207-4-25		4.6
	16-26	NBS-203-3-25		4
	27-51	NBS-115-2-25	NBS-115-2-15	3
2	5-7	NBS-307-6-25		6.2
	8-13	NBS-215-5-25		5.4
	14-21	NBS-207-4-25		4.6
	22-36	NBS-203-3-25	NBS-203-3-15	4
3	37-71	NBS-115-2-25	NBS-115-2-15	3
	4-5	NBS-407-8-25		6.2
	6-7	NBS-315-7-25		6.2
	8-12	NBS-307-6-25		6.2
	13-20	NBS-215-5-25		5.4
	21-32	NBS-207-4-25	NBS-207-4-15	4.6
	33-57	NBS-203-3-25	NBS-203-3-15	4
	58-70	NBS-115-2-25	NBS-115-2-15	3
	71-85	NBS-115-2-25	NBS-115-2-15	3
86-89	NBS-115-2-15		3	
90-113	NBS-115-2-15		3	
5	5.00	NBS-415-9-25		8
	6-8	NBS-407-8-25		6.2
	9-12	NBS-315-7-25		6.2
	13-20	NBS-307-6-25		6.2
	21-36	NBS-215-5-25	NBS-215-5-15	5.4
	37-56	NBS-207-4-25	NBS-207-4-15	4.6
	57-70	NBS-203-3-25	NBS-203-3-15	4
	71-85	NBS-203-3-25	NBS-203-3-15	4
	86-103	NBS-203-3-15		4
104-114	NBS-115-2-15		3	
115-140	NBS-115-2-15		3	
7.5	5-6	NBS-507-10-25		8.5
	7-8	NBS-415-9-25		8
	9-13	NBS-407-8-25		6.2
	14-19	NBS-315-7-25		6.2
	20-32	NBS-307-6-25	NBS-307-6-15	6.2
	33-56	NBS-215-5-25	NBS-215-5-15	5.4
	57-70	NBS-207-4-25	NBS-207-4-15	4.6
	71-85	NBS-207-4-25	NBS-207-4-15	4.6
	86-93	NBS-207-4-15		4.6
	94-140	NBS-203-3-15		4

\*Additional cooling provisions may be required, consult the factory with application details

HP	Output RPM	Reducer Selection		Minimum Sheave Dia.
10	7-8	NBS-507-10-25		8.5
	9-12	NBS-415-9-25		8
	13-18	NBS-407-8-25		6.2
	19-26	NBS-315-7-25	NBS-315-7-15	6.2
	27-45	NBS-307-6-25	NBS-307-6-15	6.2
	46-70	NBS-215-5-25	NBS-215-5-15	5.4
	71-78	NBS-215-5-25	NBS-215-5-15	5.4
	79-92		NBS-207-4-15	4.6
	93-105	NBS-207-4-15		4.6
106-141	NBS-207-4-15		4.6	
15	10-13	NBS-507-10-25		8.5
	14-19	NBS-415-9-25		8
	20-28	NBS-407-8-25	NBS-407-8-15	6.2
	29-41	NBS-315-7-25	NBS-315-7-15	6.2
	42-70	NBS-307-6-25	NBS-307-6-15	6.2
	71-75	NBS-307-6-25	NBS-307-6-15	6.2
	76-93		NBS-215-5-15	5.4
	97-115	NBS-215-5-15		5.4
	116-125	NBS-215-5-15		5.4
20	13-18	NBS-507-10-25		8.5
	19-25	NBS-415-9-25	NBS-415-9-15	8
	26-38	NBS-407-8-25	NBS-407-8-15	6.2
	39-57	NBS-315-7-25	NBS-315-7-15	6.2
	58-70	NBS-307-6-25	NBS-307-6-15	6.2
	71-114	NBS-307-6-15		6.2
115-125	NBS-215-5-15		5.4	
25	16-22	NBS-507-10-25		8.5
	23-32	NBS-415-9-25	NBS-415-9-15	8
	33-49	NBS-407-8-25	NBS-407-8-15	6.2
	50-70	NBS-315-7-25	NBS-315-7-15	6.2
	71-74	NBS-315-7-25	NBS-315-7-15	6.2
	75-104	NBS-307-6-15		6.2
	105-113	NBS-307-6-15		6.2
	114-125	NBS-307-6-15	NBS-407-8-15	6.2
30	19-27	NBS-507-10-25	NBS-507-10-15	8.5
	28-39	NBS-415-9-25	NBS-415-9-15	8
	40-60	NBS-407-8-25	NBS-315-7-15	6.2
	61-70	NBS-315-7-25	NBS-315-7-15	6.2
	71-98		NBS-315-7-15	6.2
	99-125	NBS-307-6-15		6.2
40	26-37	NBS-507-10-25	NBS-507-10-15	8.5
	38-53	NBS-415-9-25	NBS-415-9-15	8
	54-70	NBS-407-8-25	NBS-407-8-15	6.2
	71-84		NBS-407-8-15	6.2
	85-89	NBS-315-7-15		6.2
90-120	NBS-315-7-15		6.2	
50	32-46	NBS-507-10-25	NBS-507-10-15	8.5
	47-69	NBS-415-9-25	NBS-415-9-15	8
	70-75	NBS-407-8-25	NBS-407-8-15	6.2
	76-110		NBS-407-8-15	6.2
	111-120	NBS-315-7-15		6.2
60	39-56	NBS-507-10-25	NBS-507-10-15	8.5
	57-75	NBS-415-9-25	NBS-415-9-15	8
	76-85		NBS-415-9-15	8
	86-115		NBS-407-8-15	6.2
75	50-72	NBS-507-10-25	NBS-507-10-15	8.5
	73-75	NBS-415-9-15*	NBS-415-9-25*	8
	76-120	NBS-415-9-15*		8
100	69-120		NBS-507-10-15	8.5
125	91-120	NBS-507-10-15*		8.5



**North American Electric, Inc.**

## **CUSTOMERS WHO PURCHASE NBS SHAFT MOUNT REDUCERS ALSO USE . . .**



**Design C Crusher  
Duty Motors**



**56C Frame Three  
Phase Motors**



**Controls**



**Farm Duty Motors**





Data subject to change without notice

**North American Electric**  
Reno, NV

Distributed by:

**North American Electric**  
Houston, TX

North American Electric, Inc. • P.O. Drawer 130 • 350 Vaiden Drive • Hernando, MS 38632  
Toll Free: 800-884-0404 • Phone: 662-429-8049 • Fax: 662-429-8546 • Sales: 800-884-0405  
www.naemotors.com • e-mail: sales@naemotors.com

